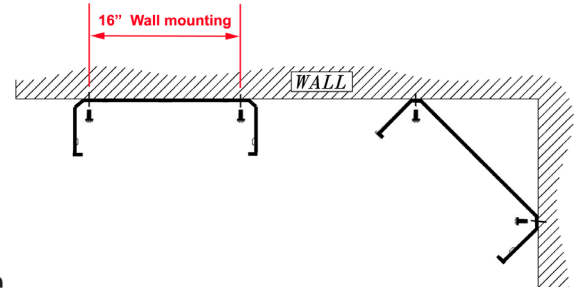


Surtec's wall mount hinged brackets are designed for office or home patch panel mounting with no rack. The side hinged design provides for a better installation and more user friendly mounting and terminating.

Features / Applications:

1. UL 1863 safety Listed
2. Standard 19" patch panel installation
3. Corner mounting is a feature of this product
4. Comes in 1U to 6U bracket height
5. Neat cable management design with cable tie



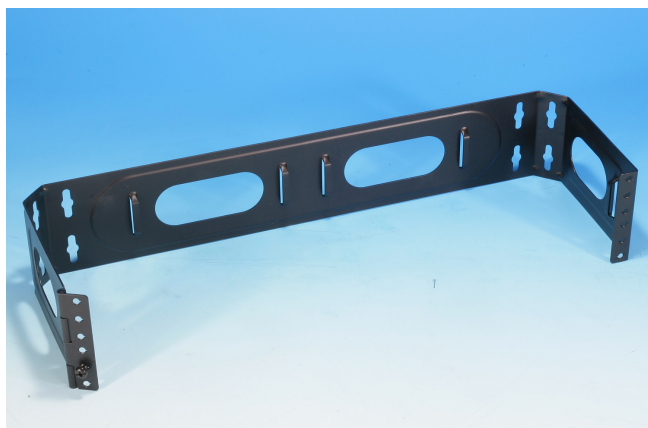
2012H-1U6

1U side-hinged wall mount bracket

**Standard dimensions :
19"(length)*4"(depth)*1.72"(height)

Ordering Information

Item(s) / Polybag	Items/Inner box	Items/Outer box
1	1	
Material	SPCC steel	



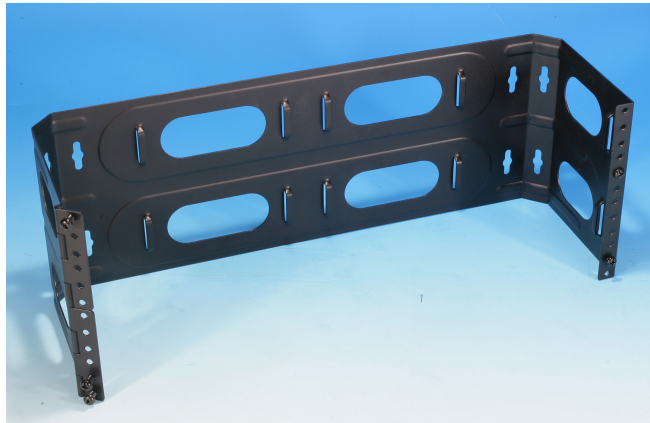
2012H-2U6

2U side-hinged wall mount bracket

**Standard dimensions :
19"(length)*4"(depth)*3.47"(height)

Ordering Information

Item(s) / Polybag	Items/Inner box	Items/Outer box
1	1	
Material	SPCC steel	



2012H-4U6

4U aside-hinged wall mount bracket

****Standard dimensions :
19"(length)*4"(depth)*6.97"(height)**

Ordering Information

Item(s) / Polybag	Items/Inner box	Items/Outer box
1	1	
Material	SPCC steel	



2012H-6U6

6U aside-hinged wall mount bracket

****Standard dimensions :
19"(length)*4"(depth)*10.47"(height)**

Ordering Information

Item(s) / Polybag	Items/Inner box	Items/Outer box
1	1	
Material	SPCC steel	