

Feature:

1. UL safety verified
2. UL94V-0 fire retardant plastic
3. Works with Surtec's standard keystone jacks
4. ANSI/TIA/EIA-606 compliant

Application:

1. For use with data, multimedia, voice and fiber connectors
2. It can be used in commercial or home cabling environments
3. Customized colors available
4. Cover snaps on for ease of installation

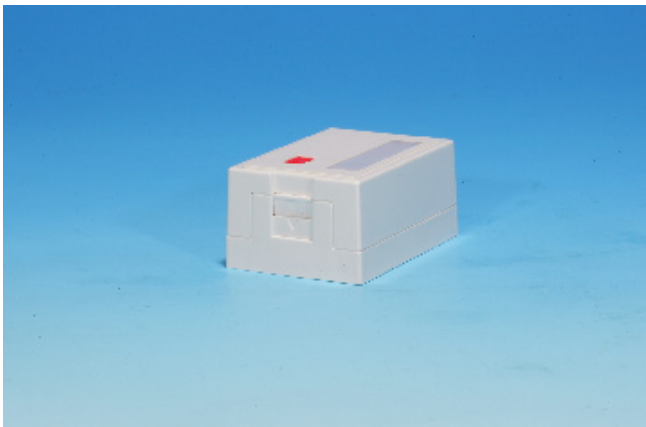


In case of your connector can't fit in the box, remove the "knock-out" in the bottom of the box using a screwdriver or a pair of cutting pliers.

SURTEC 1032SB surface mount boxes can be used with standard UTP or FTP keystone jacks. These boxes have shutter doors and are available with 1 to 6 ports for your different application.

Features / Applications:

- 1. UL safety verified**
- 2. UL94V-0 fire retardant plastic**
- 3. Works with Surtec's standard keystone jacks**
- 4. Customized colors available**
- 5. Dust mitigating shutter doors**
- 6. For applications using either UTP or FTP keystone jacks**
- 7. Snap-on assembling cover design**



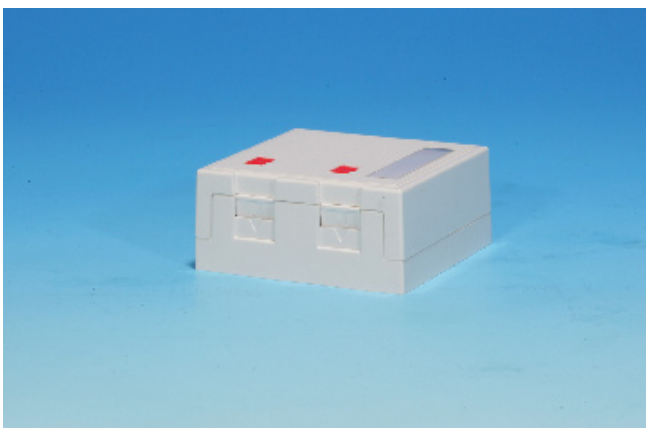
1032SB1-B

1-port Surface Mount Box with shutter door

****With ID Window and Icon**

Ordering Information

Item(s) / Polybag	Items/Inner box	Items/Outer box
1	50	200
Color	Customized colors available	



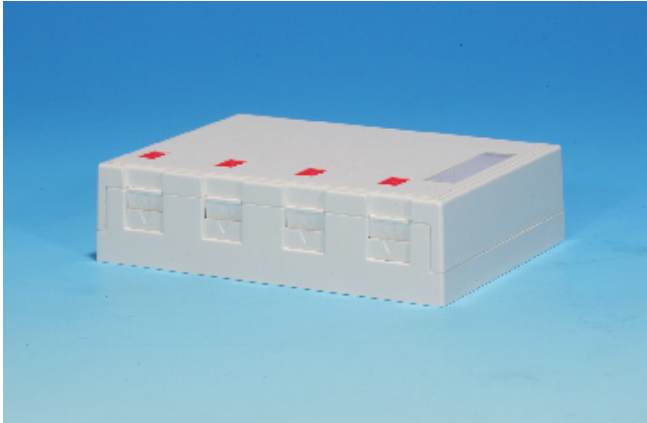
1032SB2-B

2-port Surface Mount Box with shutter doors

****With ID Window and Icons**

Ordering Information

Item(s) / Polybag	Items/Inner box	Items/Outer box
1	35	140
Color	Customized colors available	



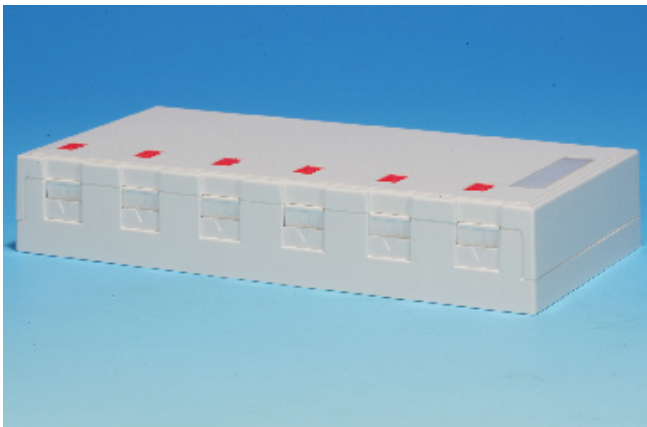
1032SB4-B

4-port Surface Mount Box with shutter doors

****With ID Window and Icons**

Ordering Information

Item(s) / Polybag	Items/Inner box	Items/Outer box
1	20	80
Color	Customized colors available	



1032SB6-B

6-port Surface Mount Box with shutter doors

****With ID Window and Icons**

Ordering Information

Item(s) / Polybag	Items/Inner box	Items/Outer box
1	12	48
Color	Customized colors available	



In case of your connector can't fit in the box, remove the "knock-out" in the bottom of the box using a screwdriver or a pair of cutting pliers.



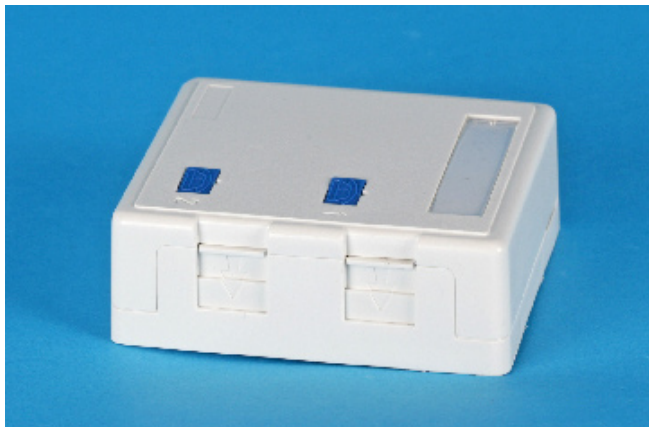
1032SB1

1-port Surface Mount Box with shutter doors

****With ID Window and Icon**

Ordering Information

Item(s) / Polybag	Items/Inner box	Items/Outer box
1	40	160
Color	Customized colors available	



1032SB2

2-port Surface Mount Box with shutter doors

****With ID Window and Icons**

Ordering Information

Item(s) / Polybag	Items/Inner box	Items/Outer box
1	40	160
Color	Customized colors available	

SURTEC 1032SB surface mount boxes can be used with standard UTP or FTP keystone jacks. These boxes have shutter doors and are available with 1 to 6 ports for your different application.

Features / Applications:

- 1. UL safety verified**
- 2. UL94V-0 fire retardant plastic**
- 3. Works with Surtec's standard keystone jacks**
- 4. Customized colors available**
- 5. Dust mitigating shutter doors**
- 6. For applications using either UTP or FTP keystone jacks**
- 7. Snap-on assembling cover design**



1032SB1-D

1-port Surface Mount Box with shutter doors

****With ID Window and Icon**

Ordering Information

Item(s) / Polybag	Items/Inner box	Items/Outer box
1	50	200
Color	Customized colors available	



1032SB2-D

2-port Surface Mount Box with shutter doors

****With ID Window and Icons**

Ordering Information

Item(s) / Polybag	Items/Inner box	Items/Outer box
1	35	140
Color	Customized colors available	



1032SB4-D

4-port Surface Mount Box with shutter doors

****With ID Window and Icons**

Ordering Information

Item(s) / Polybag	Items/Inner box	Items/Outer box
1	20	80
Color	Customized colors available	



1032SB6-D

6-port Surface Mount Box with shutter doors

*****With ID Window and Icons**

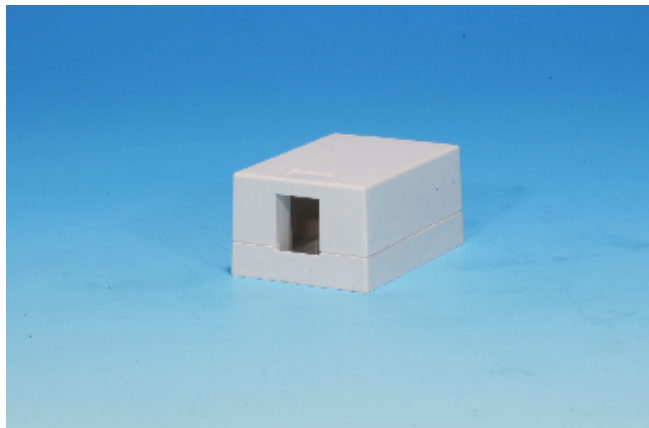
Ordering Information

Item(s) / Polybag	Items/Inner box	Items/Outer box
1	12	48
Color	Customized colors available	

SURTEC 1032E surface mount boxes can be used in data, multimedia, voice and fiber solution. They're available in sizes from 1 to 12 ports to serve in your varying applications.

Features / Applications:

- 1. UL safety verified**
- 2. UL94V-0 fire retardant plastic**
- 3. Works with Surtec's standard keystone jacks**
- 4. Customized colors available**
- 5. For use with data, multimedia, voice and fiber modules**
- 6. ANSI/TIA/EIA-606 compliant**



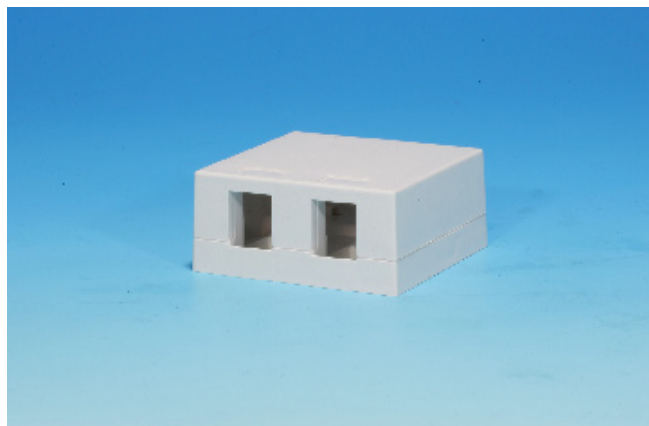
1032E1-A

1-port Surface Mount Box

****Without ID Window and Icon**

Ordering Information

Item(s) / Polybag	Items/Inner box	Items/Outer box
1	70	280
Color	Customized colors available	



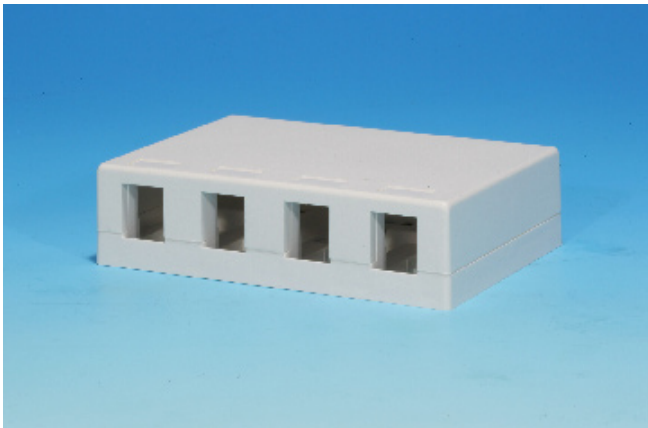
1032E2-A

2-port Surface Mount Box

****Without ID Window and Icon**

Ordering Information

Item(s) / Polybag	Items/Inner box	Items/Outer box
1	40	160
Color	Customized colors available	



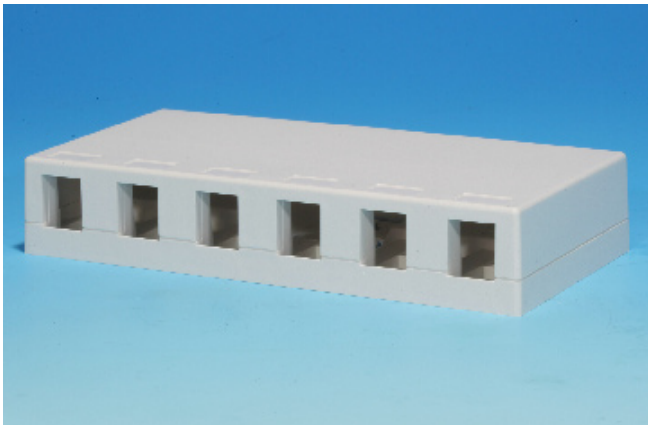
1032E4-A

4-port Surface Mount Box

****Without ID Window and Icon**

Ordering Information

Item(s) / Polybag	Items/Inner box	Items/Outer box
1	15	120
Color	Customized colors available	



1032E6-A

6-port Surface Mount Box

****Without ID Window and Icon**

Ordering Information

Item(s) / Polybag	Items/Inner box	Items/Outer box
1	15	60
Color	Customized colors available	



In case of your connector can't fit in the box, remove the "knock-out" in the bottom of the box using a screwdriver or a pair of cutting pliers.



1032E1

1-port Surface Mount Box

****Without Icon**

Ordering Information

Item(s) / Polybag	Items/Inner box	Items/Outer box
1	75	300
Color	Customized colors available	



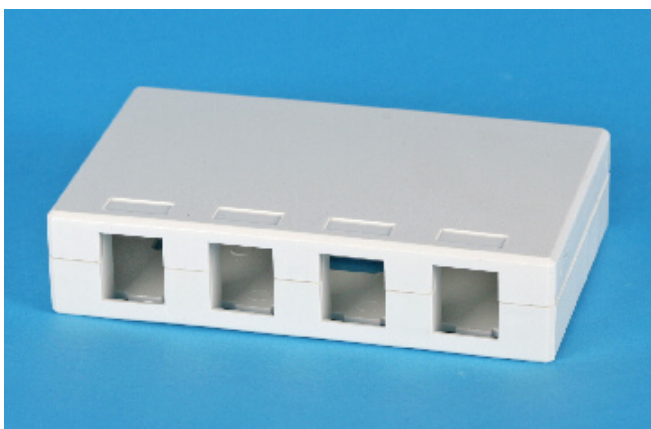
1032E2

2-port Surface Mount Box

****Without Icon**

Ordering Information

Item(s) / Polybag	Items/Inner box	Items/Outer box
1	75	300
Color	Customized colors available	



1032E4

4-port Surface Mount Box

****Without Icon**

Ordering Information

Item(s) / Polybag	Items/Inner box	Items/Outer box
1	120	120
Color	Customized colors available	



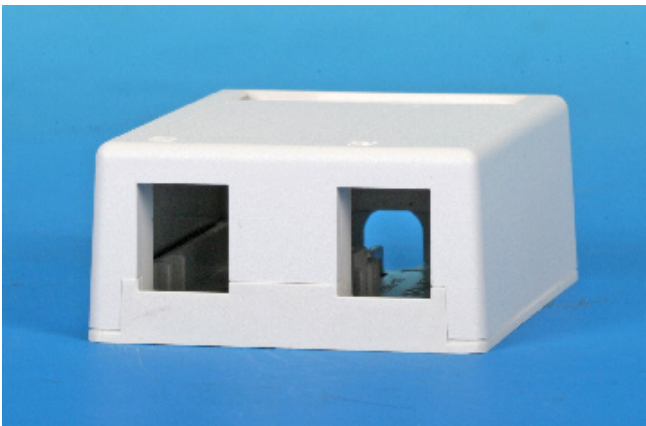
1032E6

6-port Surface Mount Box

****Without Icon**

Ordering Information

Item(s) / Polybag	Items/Inner box	Items/Outer box
1	40	40
Color	Customized colors available	



1032E2-C

2-port Surface Mount Box

****Without Icon**

Ordering Information

Item(s) / Polybag	Items/Inner box	Items/Outer box
1	45	180
Color	Customized colors available	



1032E4-C

4-port Surface Mount Box

****Without Icon**

Ordering Information

Item(s) / Polybag	Items/Inner box	Items/Outer box
1	45	45
Color	Customized colors available	



1032E6-D

6-port Surface Mount Box

****Without Icon**

Ordering Information

Item(s) / Polybag	Items/Inner box	Items/Outer box
1	40	40
Color	Customized colors available	



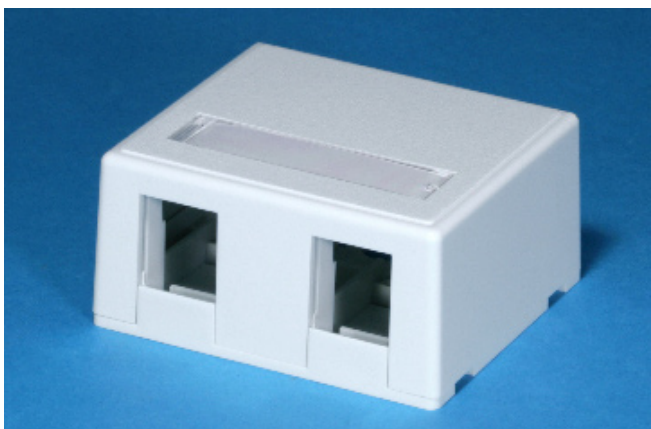
1032E1-F

1-port Surface Mount Box

****With ID Window**

Ordering Information

Item(s) / Polybag	Items/Inner box	Items/Outer box
1	50	200
Color	Customized colors available	



1032E2-F

2-port Surface Mount Box

****With ID Window**

Ordering Information

Item(s) / Polybag	Items/Inner box	Items/Outer box
1	35	140
Color	Customized colors available	



1032E12-FI

12-port Surface Mount Box

****With ID Window and Icons**

Ordering Information

Item(s) / Polybag	Items/Inner box	Items/Outer box
1	40	40
Color	Customized colors available	