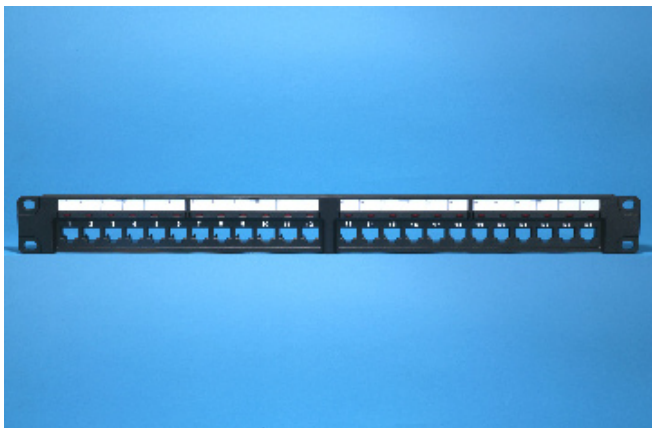
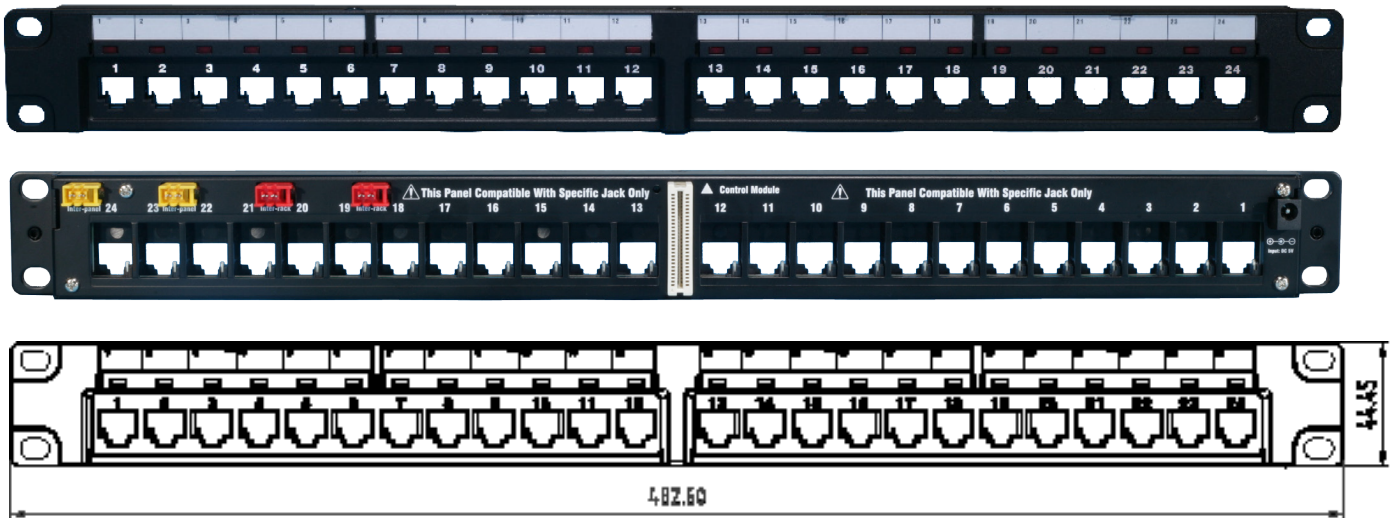


SURTEC 2012KD-24 R/G UTP 24 Port Snap-in Patch Panel is compatible with SURTEC LED Keystone Jacks. The LED color module is replaceable . The function provides cabling planning,cross connection guide,system connection monitor and physical layer maintenance and management.

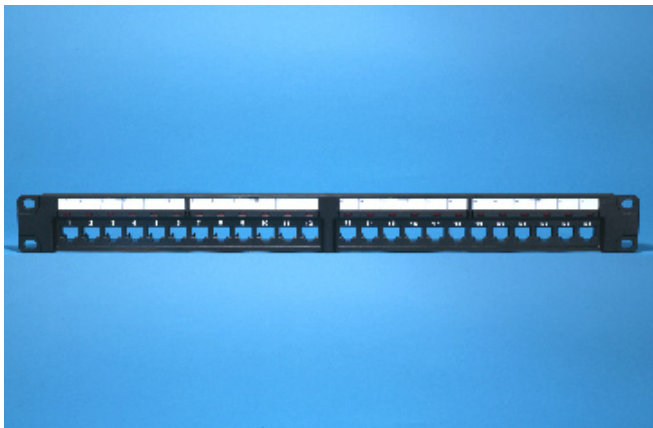
Meets the requirement of ANSI/TIA/EIA -606-A,Class 3

Features / Applications:

- 1. Compatible with regular RJ45 patch cord**
- 2. Easy to install and management**
- 3.,Mutiple colors of Led indicator**
- 4. Monitor with alert message**
- 5. UL 1863 Safety Listed**
- 6 UL94V-0 Fire Retardant Plastic**
- 7. Window label and port number identification**



2012KD-24R		
LED UTP PANEL with Red indicator		
Ordering Information		
Item(s) / Polybag	Items/Inner box	Items/Outer box
Color	Customized colors available	



2012KD-24G		
LED UTP PANEL with Green Led indicator		
Ordering Information		
Item(s) / Polybag	Items/Inner box	Items/Outer box
Color	Customized colors available	